

SSF.DP – 40/14 Data Sheet

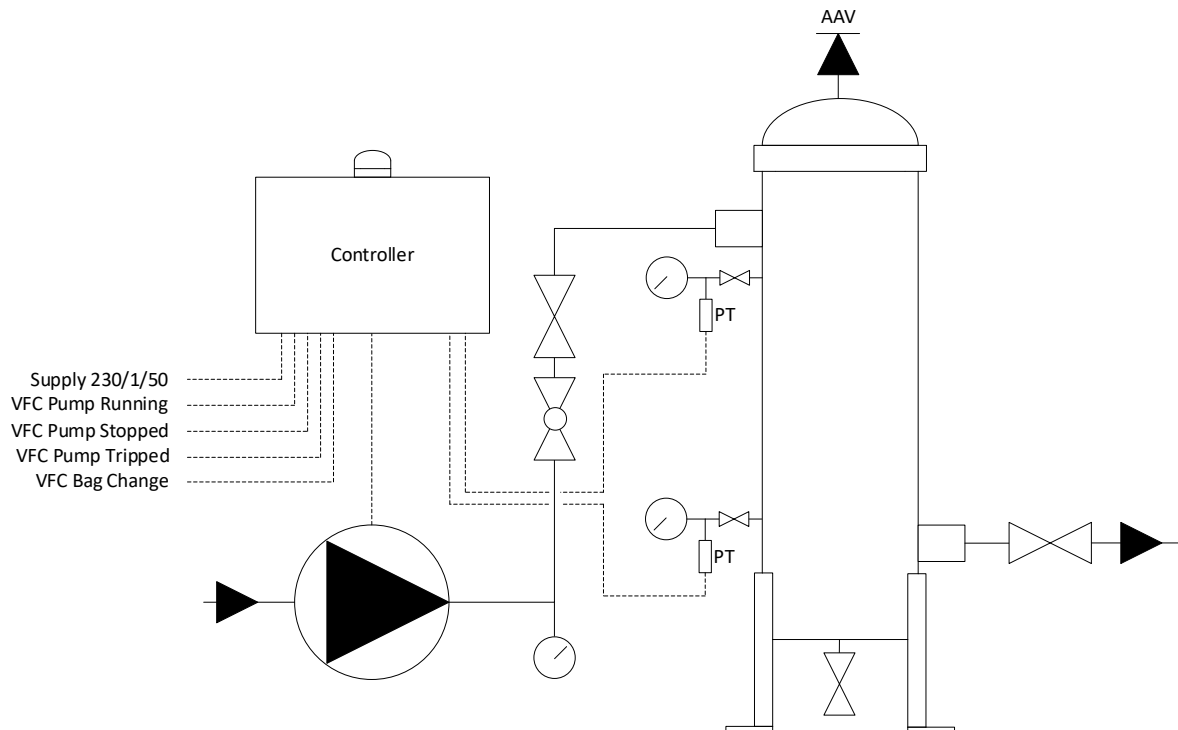


System Overview	<p>A skid-mounted bag filter sidestream filtration system draws a portion of the water from the main circuit for treatment. The system includes a single bag filter, with a circulation pump mounted on the skid. The pump extracts water from the main circuit, passes it through the bag filter, and generates sufficient pressure to return the filtered water back into the main circuit.</p> <p>The pressure drop across the bag filter is monitored using pressure transducers installed on both the inlet (dirty side) and outlet (treated side) of the filter. These readings are managed by a controller, which is programmed with a differential pressure setpoint. When the bag filter becomes blocked and requires replacement, the system alerts users via a Building Management System (BMS) signal and an LED visual indicator.</p>				
System Volume	<17m ³				
Filter	<ul style="list-style-type: none"> • 1 off Single length bag • 100% Polypropylene • Stable and predictable performance • Bags available in 5, 10, 25, 50 micron ratings • Maximum Temperature range: 100°C • pH Range: 4-10 				
Filter change	Recommended at $\Delta P < 1$ bar max				
Filtration flow	8 - 14m ³ /h				
Filter housing	316 Stainless Steel bag filter housing with 2 off pressure gauges, 2 off pressure transducers and an auto air vent (AAV)				
Magnet	Includes 2 off high strength magnets for metal oxide capture				
Filter housing Drain	½" BSP with ball valve				
Differential Pressure Set Point Range	Settable from 0.4 to 1 bar dP				
Power Supply	240V 1ph, 7.95A				
Pump Specification	Grundfos CM10-2 A-R-A-E-AQQE C1-A-A-N Circulator 1.3kW, 7.95A @ 230V				
Pump Protection	Motor Protection Circuit Breaker				
Skid frame	<p>Stainless Steel 304 base frame with screwed adjustable feet.</p> <p>Foot print: 580mm x 480mm</p> <p>O/A Height: 1000mm</p>				
Connections Inlet/Outlet	DN40/DN40				
Max Operating Temp	90°C				
Max Operating Pressure	10 Bar				
BMS	VFC – Pump Running + LED Indication VFC – Pump Stopped VFC – Pump Tripped + LED Indication VFC – Differential Pressure Warning + LED Indication + Beacon				
	Running LED & VFC	Stopped VFC	Tripped LED & VFC	Pressure Warning LED & VFC	Common Alarm Beacon
Pump Stopped	OFF	ON	OFF	OFF	OFF
Pump Running	ON	OFF	OFF	OFF	OFF
Pump Overload	OFF	ON	ON	OFF	OFF
DP 80%	ON	OFF	OFF	ON	ON
DP 100%	OFF	ON	OFF	ON	ON
Beacons	Change Filter				
Options	<ul style="list-style-type: none"> • Lagging Kit • Tundish and valve for 'Dosing pot' conversion 				

SSF.DP – 40/14 Data Sheet



Schematic



Illustrative Indication of layout. Model variations may vary.

