

# VortexPro\_100 Data Sheet

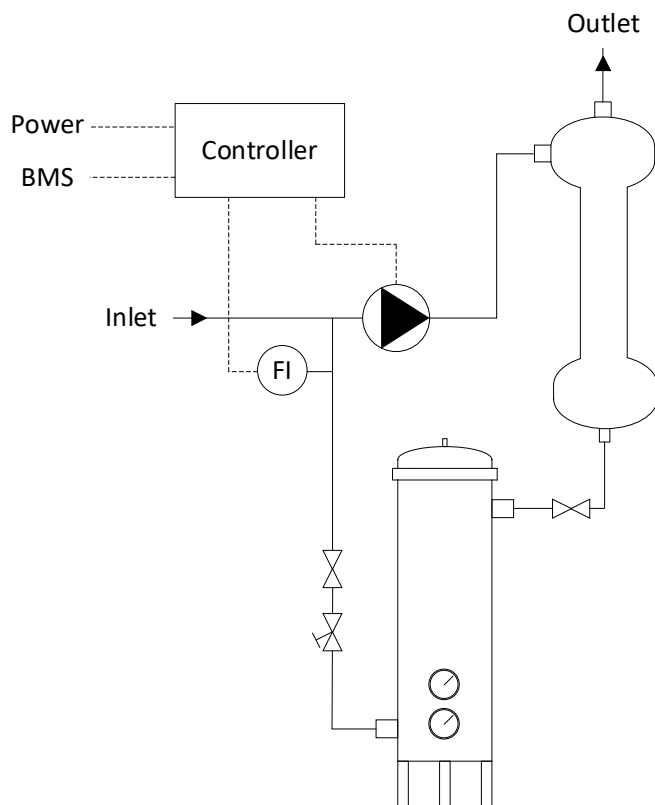


System Overview	<p>A skid-mounted cyclone filter sidestream filtration system designed for closed-loop HVAC circuits. The VortexPro_075 draws a portion of system water, separates debris using centrifugal force, and returns clean water to the system.</p> <p>The cyclone features a bag filter mounted on the purge line to capture solids extracted by the separation process. The debris is retained within the bag, while the purged water is redirected to the front end of the cyclone system, now void of particulate. This enables zero net water loss from the system circuit.</p> <p>When the bag filter is full, a switch is triggered to notify the Building Management System (BMS) that a bag change is required. Bag changes result in minimal water loss and the system is quickly returned to service.</p>
System Volume	8-20m <sup>3</sup>
Filtration flow	4.5 - 7.5 m <sup>3</sup> /hr
Cyclone vessel Material	Powder coated Mild steel (st/st options available)
Pressure-drop over cyclone	Recommended 0.6 to 1 bar
Power Supply	230/1/50
Full Load Current	3.18A
Motor Size	0.5kW
Dimensional Info	<p>Stainless Steel 304 base frame with adjustable feet.</p> <p>Foot print: 500mm x 1200mm – Frame plus free standing close coupled bag filter housing</p> <p>O/A Height: 1250mm</p>
Connections Inlet/Outlet	DN40/DN25
Max Operating Temp	90°C
Max Operating Pressure	10 Bar
Control	<p>Powder coated mild steel enclosure c/w</p> <p>Lockable rotor isolator switch</p> <p>Pump Start/Stop LED push button switch</p> <ul style="list-style-type: none"> <li>• LED indication for fault</li> </ul>
BMS	<p>BMS – Remote Link: Start/ Stop</p> <p>1 x VFC – General Fault</p> <ul style="list-style-type: none"> <li>• Bag Filter change</li> <li>• Pump Trip</li> </ul>

# VortexPro\_100 Data Sheet



## Schematic



**Illustrative Indication of layout. Model variations may vary.**

